

## **CORRIGENDUM - I**

*for*

Tender Notification No.: 24SP076T dated: 06.06.2024

**Notice Inviting Tender for the supply of furniture and fixtures for classrooms & office cabins (at Fifth and Sixth floor) in Chennai Campus of IIM Tiruchirappalli**

### **Corrigendum/Amendments in the tender document**

1. Please refer to the above-mentioned tender document for the the supply of furniture and fixtures for classrooms & office cabins (at Fifth and Sixth floor) in Chennai Campus of IIM Tiruchirappalli.
2. The following changes have been made in the Tender Document through this corrigendum – I

S. No	Reference to the main tender document	Amendments	
1	Page No. 23 -28 of the main tender Document i.e. Annexure –II.	Page Number 23-28 stands cancelled, and Revised Annexure – II (Price Bid – BoQ) is incorporated from Page 2 of this Corrigendum. Hence, the bidder should quote their rate only in the Revised Price Bid as available in this Corrigendum – I and the same has to be placed in Price Bid Cover(i.e. Cover 2), else the bid will not be considered for the further evaluation.	
2	Stage -2 of Tender Evaluation process under Page No. 14 of the Tender Document	<b>For</b>	<b>Read As</b>
		The information provided in the technical bid will be used for understanding and assessing/evaluating the quality of solution being proposed by the Bidder. Technical evaluation of the Bidder will depend on the information provided herein by the committee members. Technical bid score, out of 100, will be arrived based on the following Parameters:	The information provided in the technical bid will be used for understanding and assessing/evaluating the quality of solution being proposed by the Bidder. Technical evaluation of the Bidder will depend on the information provided herein by the committee members. Technical bid score, <b>out of 50</b> , will be arrived based on the following Parameters:
3	Indicative Images & Drawings are attached as Appendix – I & II of this corrigendum.		
4	For any clarifications arise during execution, decision of Engineer i/c will be final and binding.		

All other points mentioned in the Tender document other than the above Corrigendum will remain the same.

**REVISED ANNEXURE-II: (Revised PRICE BID - BOQ)**

S. No	Description	Unit	Qty	Rate per unit (in Rs.)	Total Amount (in Rs.)
1	Supplying and fixing of Students desk of size 5'0"x 2'0"x 2'6" made up of 19mm BWR approved make plywood, 1mm thick laminate finish of approved make with 2mm thick edge banding tape and the frame with MS section of CR pipe 2" x 2" size (2mm thick) for framing all around, top with powder coated finish with all required accessories (of approved design) etc complete as per the standard specification and as directed by the EIC. (including fixing of desk on floor)	Nos	152		
2	Supplying and fixing of class room faculty computer table of size 3'0"x 2'0"x 2'6" made up of 19mm BWR approved make plywood, 1mm thick laminate finish of approved make with 2mm thick edge banding tape and the frame with MS section CR pipe 2" x 2" (2mm thick) for framing all around, top with powder coated paint finish of approved make, keyboard tray with all required accessories(of approved design) etc complete as per the standard specification and as directed by the EIC.	Nos	6		
3	Supplying and fixing of lecture Podium table of size 3'0"x 2'0"x 3'6" made up of 19mm BWR approved make plywood, 1mm thick laminate finish of approved make with 2mm thick edge banding tape, keyboard tray, 2 side runner tray with all required accessories (of approved design) etc complete as per the standard specification and as directed by the EIC.	Nos	6		
4	Supplying and fixing of faculty table of size 5'0"x 2'6"x 2'6" & Drawer unit of size 1'6"x 1'6"x 2'0" of 19mm BWR approved make plywood, 1mm thick laminate finish of approved make with 2mm thick edge banding tape and the frame with MS section CR pipe 2" x 2" (2mm thick) for framing all around, top size with powder coated finish, keyboard tray with all required accessories (of approved design) etc complete as per the standard specification and as directed by the EIC.	Nos	12		
5	Supplying and fixing of faculty file storage unit of size 3'0"x 1'6"x 4'0" of 19mm BWR approved make plywood, 1mm thick laminate finish for exterior & 0.8mm thick laminate finish for interior of approved make with 2mm thick edge banding tape with 3 partitions with all required accessories, handle, lock, towerbolt, (of approved design) etc complete as per the standard specification and as directed by the EIC.	Sqm	20		

6	Supplying and fixing of office room, staff table of size 5'0"x 2'6"x 2'6" & drawer unit of size 1'6"x 1'6"x 2'0" made up of 19mm BWR approved make plywood, 1mm thick laminate finish of approved make with 2mm thick edge banding tape, MS section CR pipe 2" x 2" (2mm thick) for framing all around, top with powder coated finish, keyboard tray, one draw of size 18" width with all required accessories, handle, lock, towerbolt (of approved design)etc complete as per the standard specification and as directed by the EIC.	Nos	5		
7	Supplying and fixing of dining table of size 6'0"x 2'6"x 2'6" made up of 19mm BWR approved make plywood, 1mm thick laminate finish of approved make with 2mm thick edge banding tape and the frame with MS section CR pipe 2" x 2" (2mm thick) for framing all around, top with powder coated finish with all required accessories (of approved design)etc complete as per the standard specification and as directed by the EIC.	Nos	12		
8	Supplying and fixing of dining table of size 8'0"x 2'0"x 2'6" made up of 19mm BWR approved make plywood, 1mm thick laminate finish of approved make with 2mm thick edge banding tape and bottom support of fixed L-Bracket Island with all required accessories (of approved design)etc complete as per the standard specification and as directed by the EIC. (Necessary supports to be provided)	Nos	5		
9	Supplying and fixing of shutters for open cupboard in corridor of size 8'0"x 9'0" made up of 19mm BWR approved make plywood, 1mm thick laminate finish for exterior & 0.8mm thick laminate finish for interior of approved make with 2mm thick edge banding tape with all required accessories, handle, lock, tower bolt, (of approved design)etc., complete as per the standard specification and as directed by the EIC. (Attached as <b>Appendix-II</b> )	Sqm	75		
10	Supplying and fixing of Wardrobe box unit of size 8'0"x 2'0"x 9'0" made up of 19mm BWR approved make plywood, rear plywood of 6mm thick, 1mm thick laminate finish for exterior & 0.8mm thick laminate finish for interior of approved make with 2mm thick edge banding tape with 5 partitions for 7'0" height and above loft and providing shutter with 19mm BWR approved make plywood, 1mm thick laminate finish for exterior & 0.8mm thick laminate finish for interior of approved make with 2mm thick edge banding tape with all required accessories, handle, lock, towerbolt (of approved design) etc complete as per the standard specification and as directed by the EIC.	Sqm	90		

11	Supplying and fixing of COT for resting lounge of size 3'0" x 6'6" made up of 3"x2" country wood, 12mm & 19mm BWR plywood, 1mm thick laminate finish, with cross supports in every 2 feet distance, edge band of teak wood beading with matt polish finish and other of enamel paint finish.(Inclusive of ISO approved 5" thick mattress, 1 pillow)etc. complete as per the standard specification and as directed by the EIC.	Nos	10		
12	Supplying and fixing of side table of size 1'3"x 1'3"x 1'6" made up of 19mm BWR approved make plywood, 1mm thick laminate finish of approved make with 2mm thick edge banding tape, one draw and bottom open with all required accessories, handle, lock, (of approved design)etc complete as per the standard specification and as directed by the EIC.	Nos	10		
13	Supplying and fixing of Pantry box unit L-Shape of size 19'0"x2'0"x2'6" & 2'7"x3'6"x2'6" made up of 19mm BWR approved make plywood, 1mm thick laminate finish for exterior & 0.8mm thick laminate finish for interior of approved make with 2mm thick edge banding tape with storage/drawer units units with all required accessories, handle, lock, towerbolt. (of approved design)etc complete as per the standard specification and as directed by the EIC. (Design will be decided by the EIC at site) - (Drawer units of 3 units in each wherever and shutter with partition rack.)	Sqm	12		
14	Supplying and fixing of Pantry overhead L - shape of size 19'0"x1'6"x2'0" & 2'7"x3'6"x2'6" made up of 19mm BWR approved make plywood, 1mm thick laminate finish for exterior & 0.8mm thick laminate finish for interior of approved make with 2mm thick edge banding tape with storage/drawer units units with all required accessories, handle, lock, towerbolt. (of approved design)etc complete as per the standard specification and as directed by the EIC. (Design will be decided by the EIC at site)	Sqm	12		
15	Supplying and fixing of Library racks of size 4'0"x1'3"x7'0" Deep Book racks made up of 19mm plywood and 1mm thick laminate finish of approved make with 2mm thick edge banding tape with all required accessories. (of approved design)etc complete as per the standard specification and as directed by the EIC.	Sqm	21		
16	Supply of <b>medium back revolving chairs</b> : Supplying of Medium back chair with push back tilting mechanism with minimum of one point locking system to enable seating comfort, high density moulded fire retardant PU foam for seat and backrest, ABS cover for seat, height adjustable back, pneumatic seat height adjustment, Nylon base with hooded twin wheel nylon	Nos	450		

<p>castors all complete as per standard specifications.</p> <p>a. BACKREST: The outer frame of back rest made up of injection moulded in black Nylon and Inner frame made up of injection moulded in black polypropylene. Inner frame upholstered with mesh fabric then assembled with outer frame. Back rest sizes 550mm (H) x 400mm (W).</p> <p>b. SEAT: The seat is made up of 12mm thick (7 layers) hot pressed plywood and moulded polyurethane foam 50mm thick seat upholstered with fabric. The bottom cover made up of injection moulded in black polypropylene to cover the plywood. Seat size 475 mm (W) X 450 mm (D).</p> <p>c. SEAT FOAM: Foam made out of moulded Polyurethane foam with the following properties: Density: 45-50 Kg/m<sup>3</sup>, Hardness: 15-20 Kgf, Compression set: 50%, 10Max, Tensile strength: 0.9-1.2 Kg/cm<sup>2</sup>, Tear strength (Min): 2.2 N/cm, Resilience: 50%-60% Comfort / Indentation Factor: 2Min.</p> <p>d. ARM REST: The armrests made up of black integral skin polyurethane with 40-55 Shore Hardness and reinforced with 2mm thick M.S. insert. The armrests are fitted to the seat with seat/armrest connecting strip assembly made of powder coated 6mm thick HR steel..</p> <p>e. Mechanism: Central Tilt Mechanism / Synchro Mechanism: Conventional mechanism with two lever control for lock and seat height adjustment. Mechanism made out of MS Plate thickness is 3mm and seat tilting angle is 0°-10° and back tilting angle is 87°-109° (min 17° tilt). Also it has the back tension adjustment knob.</p> <p>f. GAS LIFT: Gas lift pipe diameter 50mm and has a Height adjustment stroke of 100-200mm.</p> <p>g. BASE: The base is injection moulded in black, glass filled nylon and fitted with 5 Nos twin wheel castors. The base is 650-660mm pitch circle diameter.</p> <p>h. CASTERS: The twin wheel castors are injection moulded in black nylon and diameter of Castor 60 mm. The chair shall conform/meet requirements of all applicable standards of BIFMA etc complete as per the standard specification and as directed by the EIC.</p> <p>Note:</p> <p>a. It is mandatory for the Bidder to submit the BIFMA certificate for the fully finished product of the revolving Chairs. The BIFMA certificate for the Individual chair spare materials is not acceptable.</p> <p>b. Indicative Images are available in <i>Appendix-I</i> of the Main tender document.</p>				
---	--	--	--	--

	c. Sample Chairs to provided and approved by the Institute before making bulk quantity. Warranty : Three years from the date of Installation				
17	<p>Supply <b>high back revolving chairs with head rest</b> - Supplying of Revolving Chair Specification: Supplying of high back chair with head rest and push back tilting mechanism with minimum of one point locking system to enable seating comfort, high density moulded fire retardant PU foam for seat and backrest, ABS cover for seat, height adjustable back, pneumatic seat height adjustment, Nylon base with hooded twin wheel nylon castors all complete as per standard specifications.</p> <p>a. (i) BACKREST: The outer frame of back rest made up of injection moulded in black Nylon and Inner frame made up of injection moulded in black polypropylene. Inner frame upholstered with mesh fabric then assembled with outer frame. Back rest sizes 550mm (H) x 400mm (W). and (ii)HEADREST: Nylon backrest frame with headrest-mesh upholstered.</p> <p>b. SEAT: The seat is made up of 12mm thick (7 layers) hot pressed plywood and moulded polyurethane foam 50mm thick seat upholstered with fabric. The bottom cover made up of injection moulded in black polypropylene to cover the plywood. Seat size 475 mm (W) X 450 mm (D).</p> <p>c. SEAT FOAM: Foam made out of moulded Polyurethane foam with the following properties: Density: 45-50 Kg/m<sup>3</sup>, Hardness: 15-20 Kgf, Compression set: 50%, 10Max, Tensile strength: 0.9-1.2 Kg/cm<sup>2</sup>, Tear strength (Min): 2.2 N/cm, Resilience: 50%-60% Comfort / Indentation Factor: 2Min.</p> <p>d. ARM REST: The armrests made up of black integral skin polyurethane with 40-55 Shore Hardness and reinforced with 2mm thick M.S. insert. The armrests are fitted to the seat with seat/armrest connecting strip assembly made of powder coated 6mm thick HR steel..</p> <p>e. Mechanism: Central Tilt Mechanism / Synchro Mechanism: Conventional mechanism with two lever control for lock and seat height adjustment. Mechanism made out of MS Plate thickness is 3mm and seat tilting angle is 0°-10° and back tilting angle is 87°-109° (min 17° tilt). Also it has the back tension adjustment knob.</p> <p>f. GAS LIFT: Gas lift pipe diameter 50mm and has a Height adjustment stroke of 100-200mm.</p> <p>g. BASE: The base is injection moulded in black, glass</p>	Nos	10		

	<p>filled nylon and fitted with 5 Nos twin wheel castors. The base is 650-660mm pitch circle diameter.</p> <p>h. CASTERS: The twin wheel castors are injection moulded in black nylon and diameter of Castor 60 mm. The chair shall conform/meet requirements of all applicable standards of BIFMA etc complete as per the standard specifications and as directed by EIC.</p> <p><b>Note:</b></p> <p>a. It is mandatory for the Bidder to submit the BIFMA certificate for the fully finished product of the revolving Chairs. The BIFMA certificate for the Individual chair spare materials is not acceptable.</p> <p>b. Indicative Images are available in <i>Appendix-I</i> of the Main tender document.</p> <p>c. Sample Chairs to provided and approved by the Institute before making bulk quantity.</p> <p>Warranty: Three years from the date of Installation</p>				
18	<p>Supply and installation of writing board of size 2'6"X2' made up of 19mm ply &amp; 1mm thk laminate both sides with 2mm thick edge band. The board should be fixed above the Existing tabletop at site etc complete as per the standard specification and as directed by the EIC.</p>	Nos	30		
<p><b>Total Amount inclusive of Supply, lifting, Shifting, Fixing/Installation, Labour and Packing, Loading, Unloading, Transportation and freight) except GST</b></p>					

*\*EIC – Engineer-In-Charge*

APPENDIX – I



**STUDENT DESK (Sl. No: 1)**



**CLASS ROOM FACULTY TABLE (Sl. No. 2)**





**Faculty Table (SI/ No. 4)**



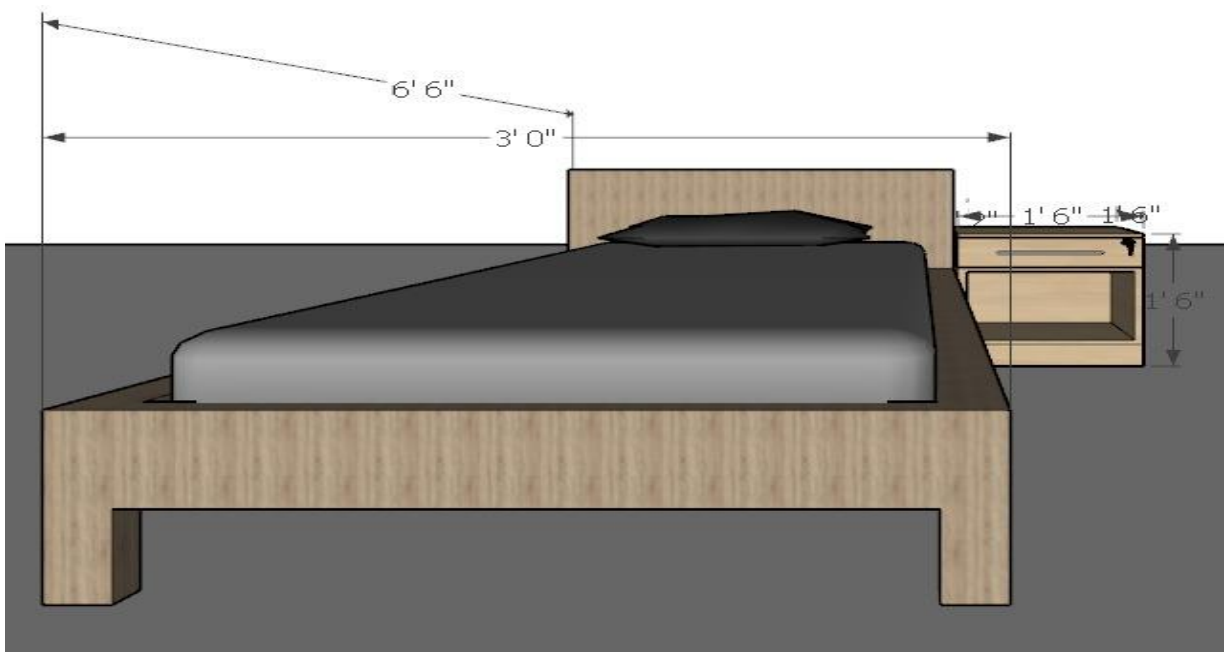
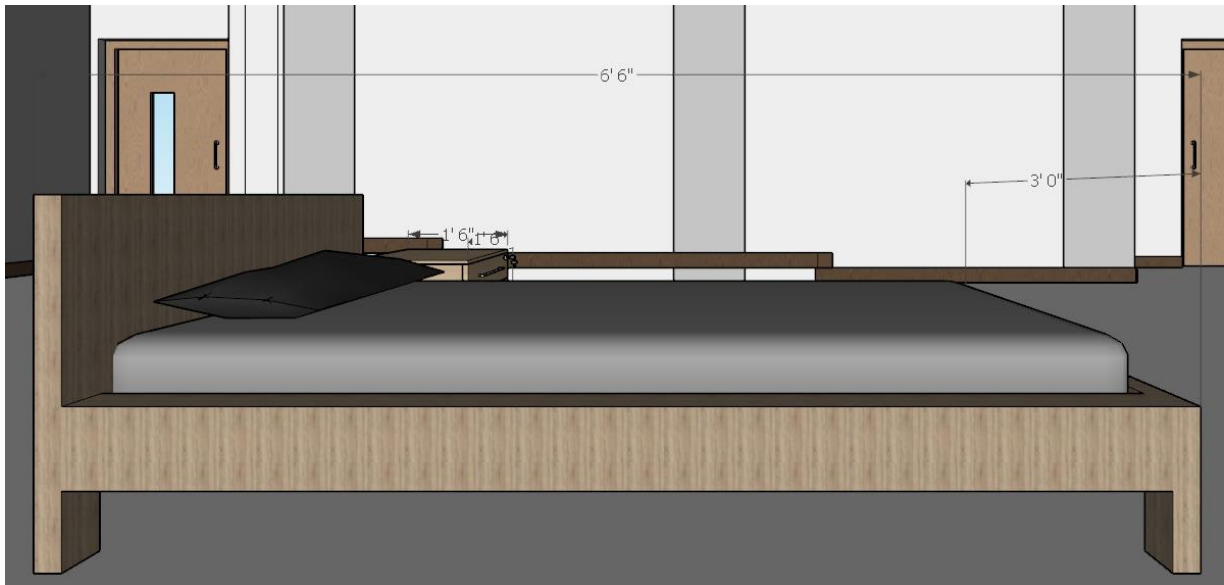
**OFFICE ROOM, STAFF TABLE (SI.No. 6)**



**STUDENTS DINING TABLE (Sl. No: 7)**



**COT SIDE TABLE (Sl. No : 12)**

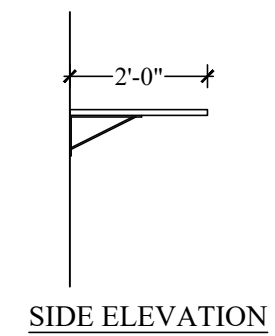
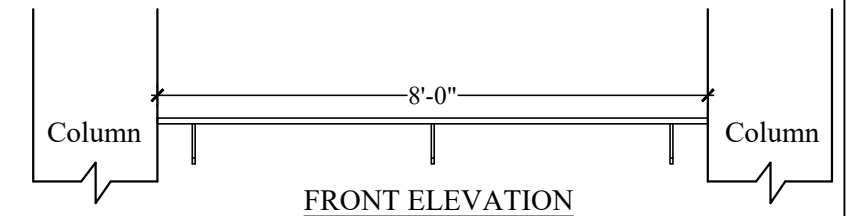
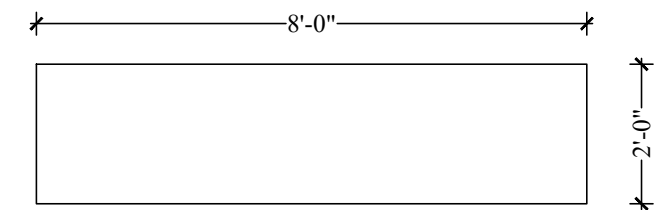
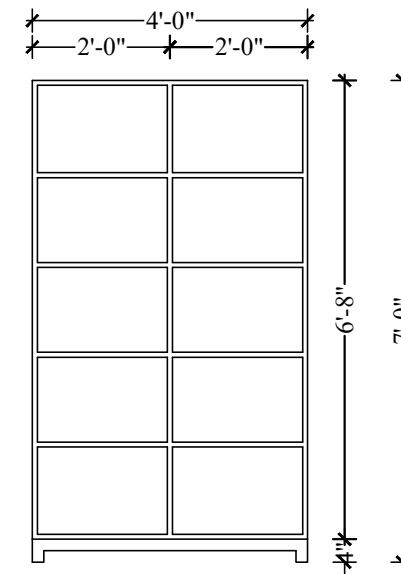
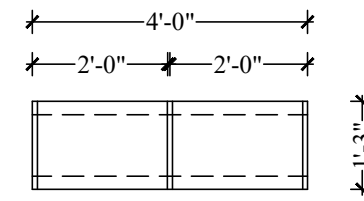
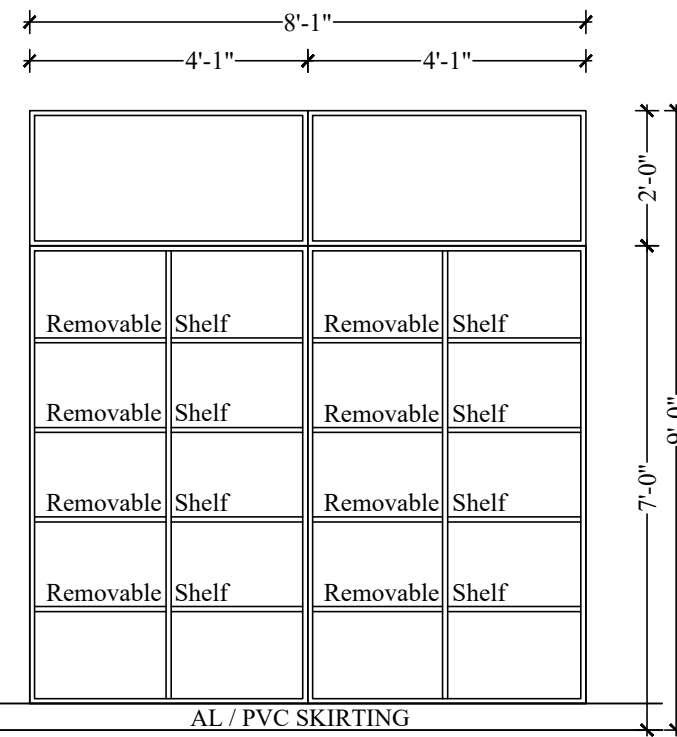
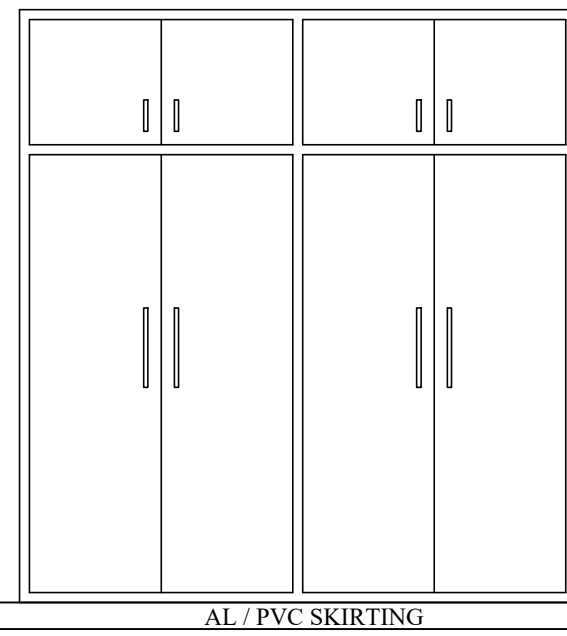
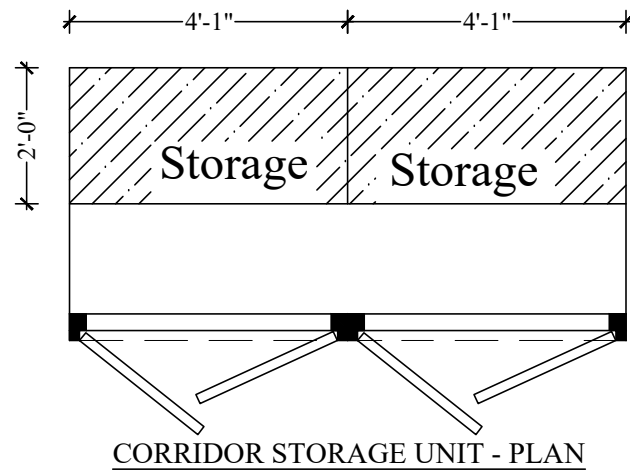


**COT (Sl. No. 11)**



**LIBRARY RACK (Sl. No: 15)**

# APPENDIX - II



FURNITURE DETAIL DRAWING